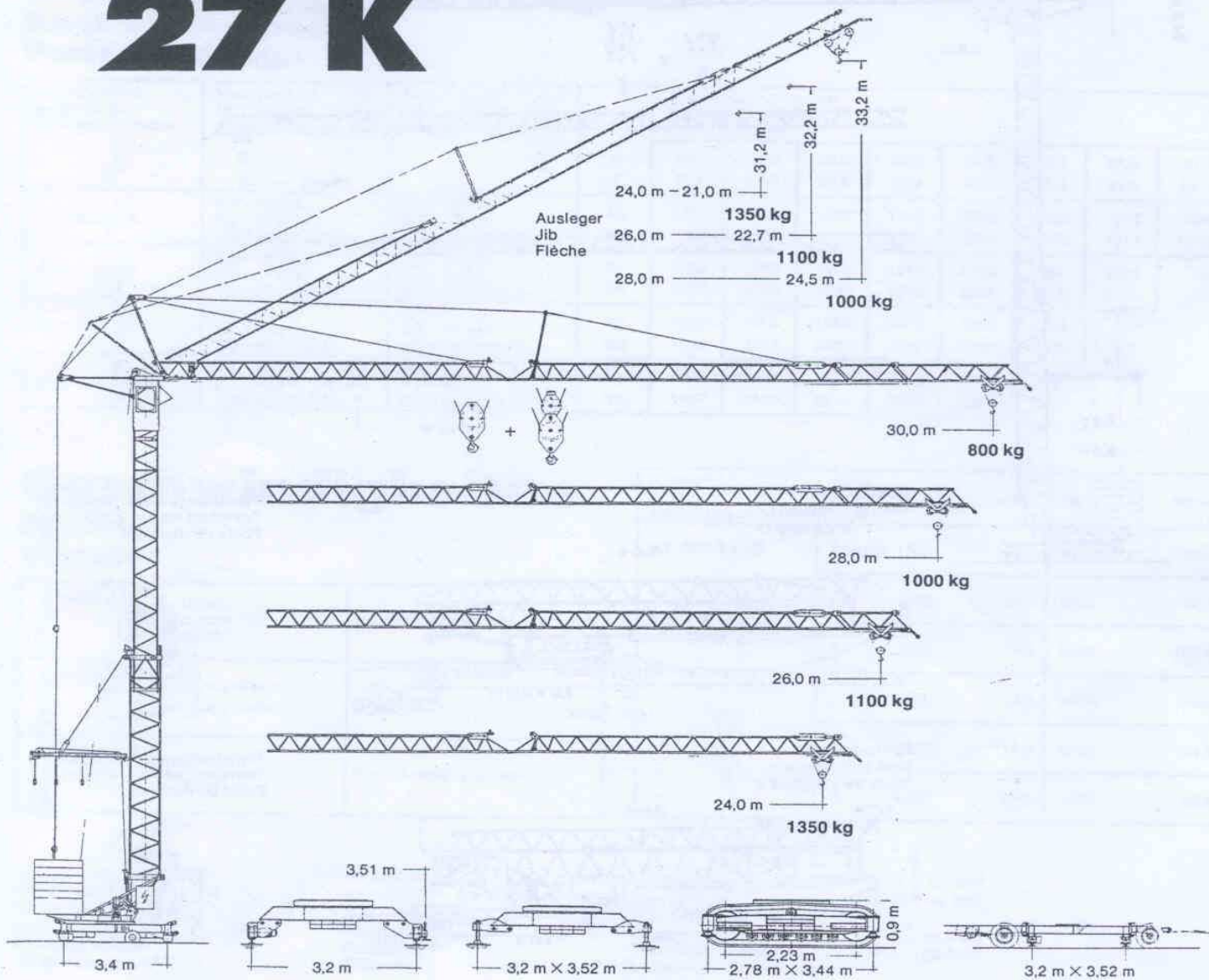


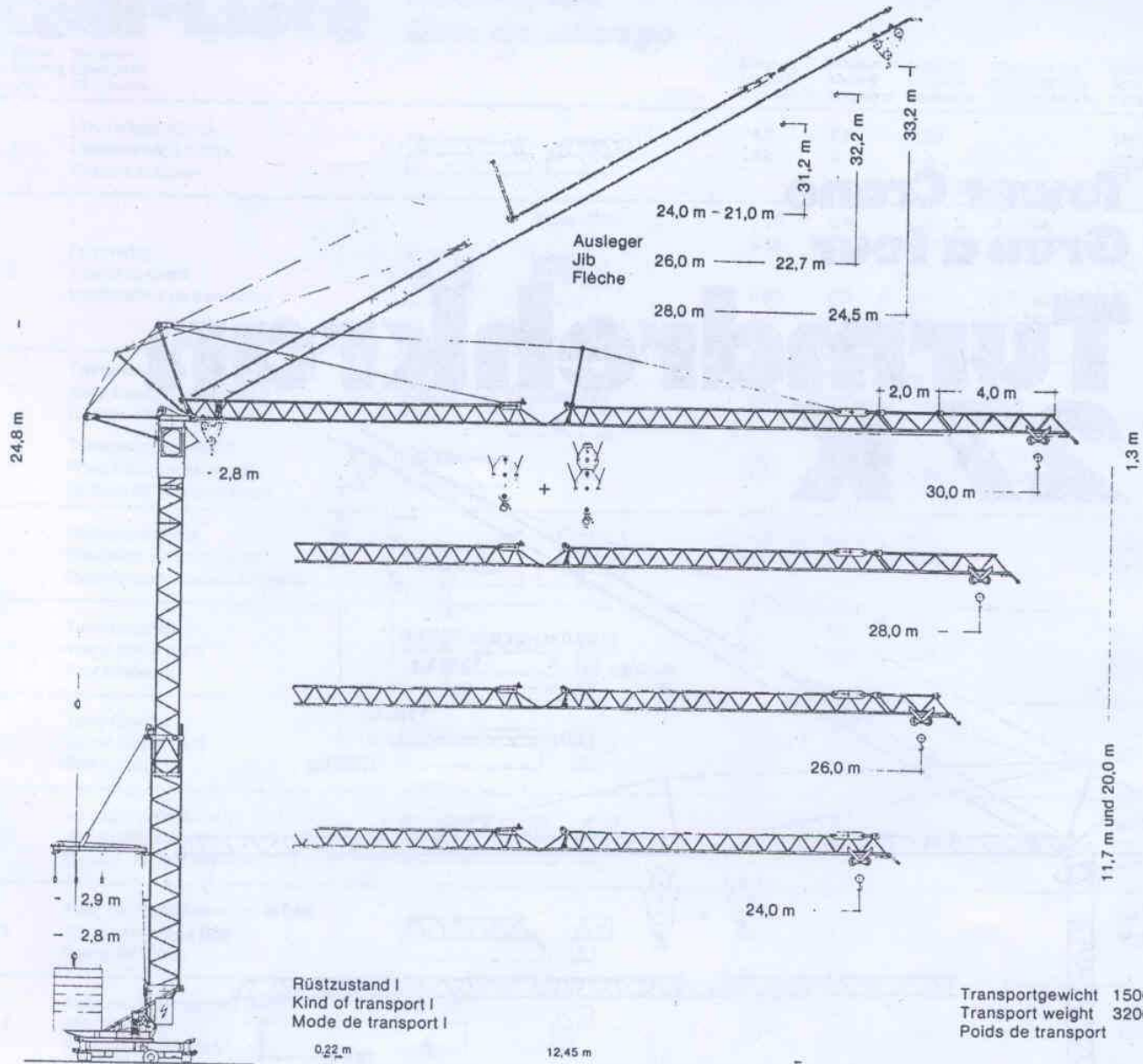
FIRMA DŹWIGOWA TADEx
 62-030 LUBOŃ, ul. Romana Maya 1
 tel./fax +48 61 89 00 484, kom. 0 601 149 358
www.tadex.strefa.pl, tadex@tadex.strefa.pl

**Tower Crane
 Grue à tour**

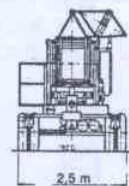
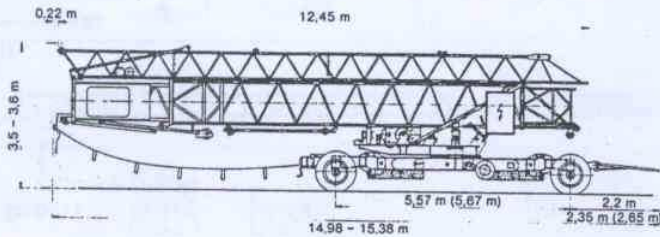
Turmdrehkran 27 K



LIEBHERR

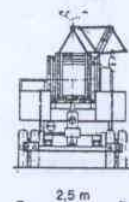
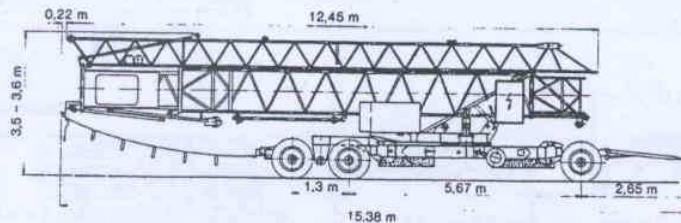


Transportgewicht 15000 kg
Transport weight 32000 lbs
Poids de transport



Rüstzustand II
Kind of transport II
Mode de transport II

Transportgewicht 19000 kg
Transport weight 41600 lbs
Poids de transport













27 K

Gewicht Weight Poids




Max. Ecklast in Betrieb Max. corner pressure in operation Réaction max. par angle en service	17251 kg 38038 lbs
Max. Ecklast außer Betrieb Max. corner pressure out of operation Réaction max. par angle hors service	10272 kg 22650 lbs
Zentralballast ca. Central ballast approx. Lest-fixe de chassis env.	2600 kg 5720 lbs



Gegengewicht ca. Counter weight approx. Contrepoids env.	14000 kg 30870 lbs
Konstruktionsgewicht Dead weight Poids de la construction	9850 kg 21720 lbs

Ausladung und Traglast Radius and capacity Portée et charge

Auslegerlänge Length of jib Longueur de flèche	Max. Traglast Max. capacity Charge max.		Max. Traglast Max. capacity Charge max.		m ft	Ausladung und Traglast Radius and capacity Portée et charge							
						16,0 52.5	18,0 59.0	20,0 65.6	22,0 72.2	24,0 78.7	26,0 85.3	28,0 91.8	30,0 98.4
30,0 m/98.4 ft	2,8 - 18,0 m 9.2 - 59.0 ft 1500 kg/3300 lbs		2,8 - 10,2 m 9.2 - 33.4 ft 3000 kg/6600 lbs		kg lbs	1730 3806	1500 3300	1320 2904	1175 2585	1055 2320	955 2100	870 1914	800 1760
28,0 m/91.8 ft	2,8 - 20,0 m 9.2 - 65.6 ft 1500 kg/3300 lbs		2,8 - 11,3 m 9.2 - 37.0 ft 3000 kg/6600 lbs		kg lbs	1965 4323	1705 3750	1500 3300	1340 2948	1205 2651	1095 2409	1000 2200	
26,0 m/85.3 ft	2,8 - 20,1 m 9.2 - 65.9 ft 1500 kg/3300 lbs		2,8 - 11,3 m 9.2 - 37.0 ft 3000 kg/6600 lbs		kg lbs	1975 4345	1715 3773	1510 3322	1345 2959	1210 2662	1100 2420		
24,0 m/78.7 ft	2,8 - 22,0 m 9.2 - 72.2 ft 1500 kg/3300 lbs		2,8 - 12,3 m 9.2 - 40.3 ft 3000 kg/6600 lbs		kg lbs	2185 4807	1900 4180	1675 3685	1500 3300	1350 2970			

Geschwindigkeiten Speeds Vitesses

	U/min 0-1 sl./min tr./mn	2,2 kW/3.0 HP
	18,0/ 36,0 m/min 59,0/118,0 ft/min	1,0/1,45 kW 1.36/2.0 HP
	25,0 m/min 82,0 ft/min	2 x 1,5 kW/2 x 2.0 HP

Hubwerk Hoist gear Mécanisme de levage	Gang Gear Boite	kg	m/min	lbs	ft/min
	1	1500	6,0	3300	20,0
	2	1500	27,0	3300	88.6
	3	1000	55,0	2200	180.0
	1	3000	3,0	6600	10.0
	2	3000	13,5	6600	44.3
	3	2000	27,0	4400	88.6

Kabelquerschnitt bei 380 V
Cross section of cable 380 V
Section of câble à 380 V

bis 20,0 m
up to 65.0 ft
jusqu'à 20,0 m

4 x 6 mm²
4 x 0.0093 sq. inch

bis 28,0 m
up to 92.0 ft
jusqu'à 28,0 m

4 x 10 mm²
4 x 0.015 sq. inch

Betriebsspannung
Operating voltage
Tension de service

380 V

Frequenz
Frequency
Fréquence

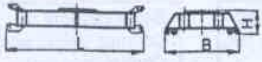

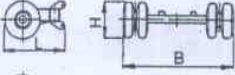
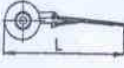
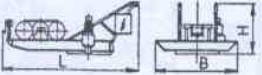

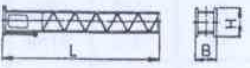




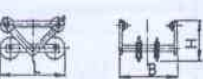
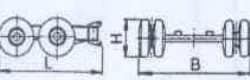
50 Hz

Gesamtmotorenleistung
Total motor output
Puissance totale des moteurs

16,4 kW
22.3 HP

Technische Daten - Technical data Caractéristiques techniques

KoLi-Liste **PACKING LIST** Liste de colisage

Pos. Item	Anzahl Quantity	Benennung Description		Länge m Length ft Longueur m	Breite m Width ft Largeur m	Höhe m Height ft Hauteur m	Einzelgew. kg Unit weight lbs Poids unitaire kg	Gesamtgew. kg Total weight lbs Poids total kg
1	1	Unterwagen kompl. Undercarriage compl. Chassis complet		4,2 13.8	2,5 8.2	0,55 1.8		1800 3960
			angetrieben	0,95 3.12	0,65 2.13	0,4 1.31	2 × 240 2 × 528	
2	4	Fahrwerke Travelling gears Mécanismes de translation		0,95 3.12	0,5 1.64	0,4 1.31	2 × 160 2 × 352	800 1760
			nicht angetrieben					
3	1	Transportachse hinten Road transport axle behind Essieux de transport arrière		1,3 4.26	2,5 8.2	1,0 3.28	1150 2535	1870 4125
4	1	Transportachse vorne Road transport axle front Essieux de transport avant		2,3 7.54	2,1 6.89	1,0 3.28	720 1590	
5	1	Drehbühne kompl. Revolving platform compl. Plate-forme tournante complète		4,0 13.1	1,6 5.25	1,8 5.9		2050 4510
6	1	Turm-Unterteil Tower (lower part) Tour inférieure		10,0 32.8	1,0 3.28	1,3 4.27		1650 3630
7	1	Turm-Oberteil Tower (upper part) Tour supérieure		12,4 40.6	0,95 3.12	1,2 3.94		1560 3432
3	1	Ausleger-Anlenkstück Jib pivoting section Elément de pied de flèche		12,3 40.35	1,1 3.6	0,8 2.62		800 1760
3	1	Ausleger-Kopfstück Jib head piece Pointe de flèche		11,7 38.4	0,8 2.62	0,75 2.46		320 704
2	1	Ausleger-Verlängerung 2,0 m Jib extension Rallonge de la flèche		2,5 6.56	0,8 2.62	0,7 2.3	2 × 60 2 × 132	65 143
1	1	Ausleger-Verlängerung 4,0 m Jib extension Rallonge de la flèche		4,5 14.7	0,88 2.62	0,7 2.3	1 × 115 1 × 253	115 253
2	1	Laufkatze kompl. Trolley compl. Chariot distributeur compl.		0,9 2.95	0,95 3.12	0,6 1.97		100 220
1	1	Transportachse Tra 200 Road transport axle Tra 200 Essieux de transport Tra 200		3,1 10.17	2,5 8.2	2,0 3.28		(2600) (5720)
1	1	Kiste mit Seilen und Kleinteilen Case with ropes and small parts Caisse avec câbles et pièces détachées		1,0 3.28	0,8 2.62	1,0 3.28		630 1386



FIRMA DŹWIGOWA TADEx
62-030 LUBOŃ, ul. Romana Maya 1
tel./fax +48 61 89 00 484, kom. 0 601 149 358
www.tadex.strefa.pl, tadex@tadex.strefa.pl